

DAYBREAK

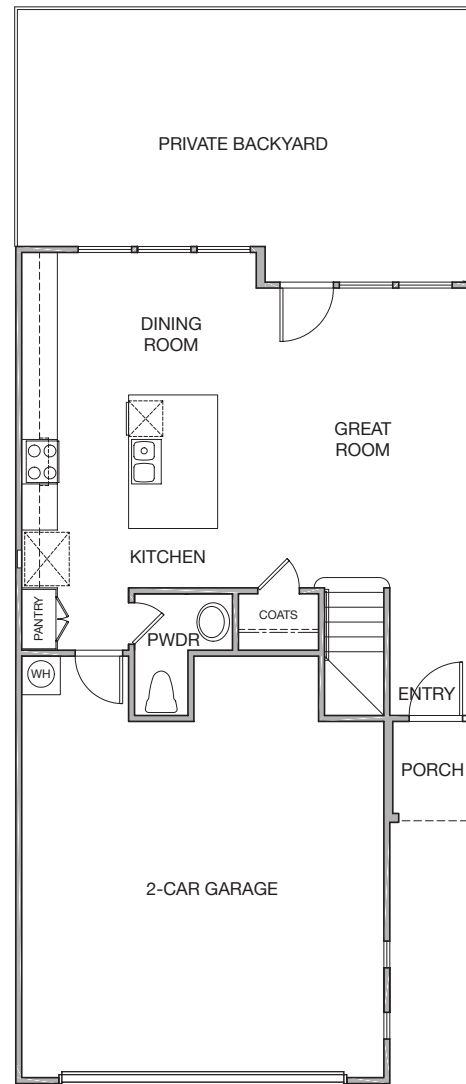
NEW TOWNHOMES IN EL CAJON  
3 to 4 Bedrooms & Private Backyards



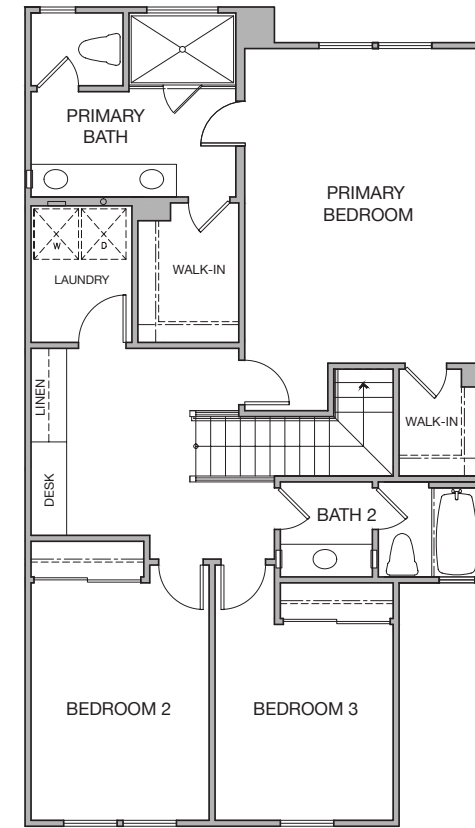


# PLAN 1

2-Story Townhome  
1,700 - 1,742 Sq. Ft.  
3 Bedrooms  
2.5 Baths  
Private Backyard  
2-Car Garage



FIRST FLOOR



SECOND FLOOR

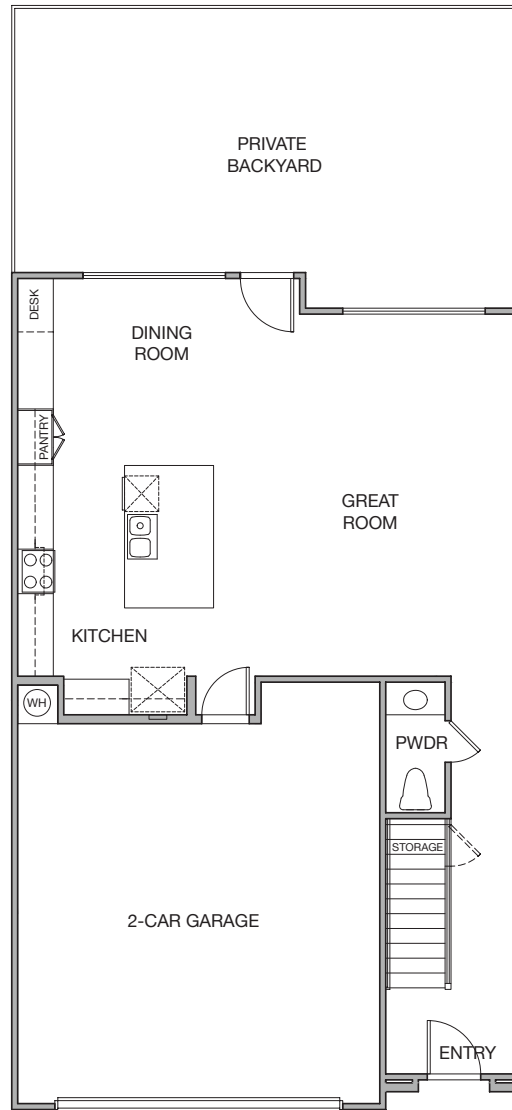
1118 N. Anza St., El Cajon, CA 92021  
(760) 994-9648 | [karen@hallmarkcommunities.com](mailto:karen@hallmarkcommunities.com) | [HallmarkCommunities.com](https://www.hallmarkcommunities.com)



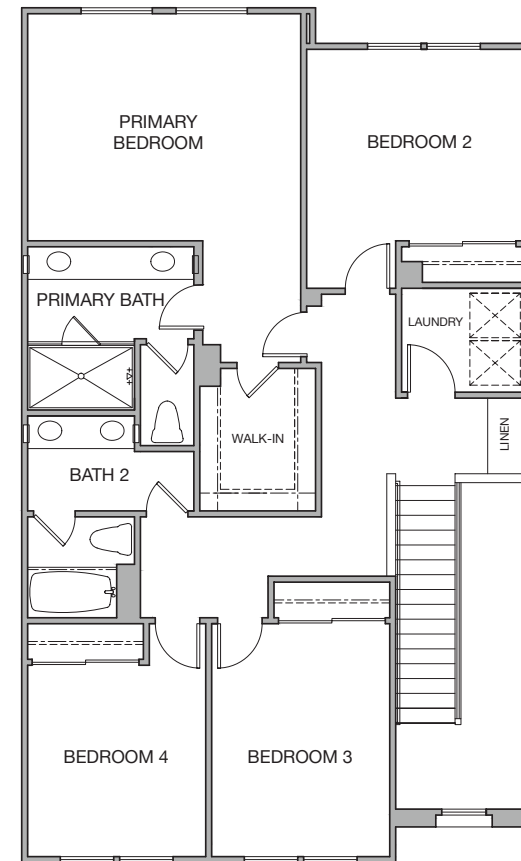
Floor plans are artists' conceptions and any dimensions are approximate. In an effort to continuously improve its product, Hallmark Communities reserves the right to alter floor plans, features, specifications and pricing without notice. Entries, windows and balconies may vary by location. Not all vehicles will fit in all garage spaces. All information (including but not limited to prices, availability, incentives, floor plans, site plans, features, standards and options, assessments and fees, planned amenities, programs, conceptual artist renderings, and community development plans) is not guaranteed and remains subject to change or delay without notice. Maps and plans are not to scale and all dimensions are approximate. CA DRE # 01106135 © 2022 Hallmark Communities

# PLAN 2

2-Story Townhome  
2,029 Sq. Ft.  
4 Bedrooms  
2.5 Baths  
Private Backyard  
2-Car Garage



FIRST FLOOR

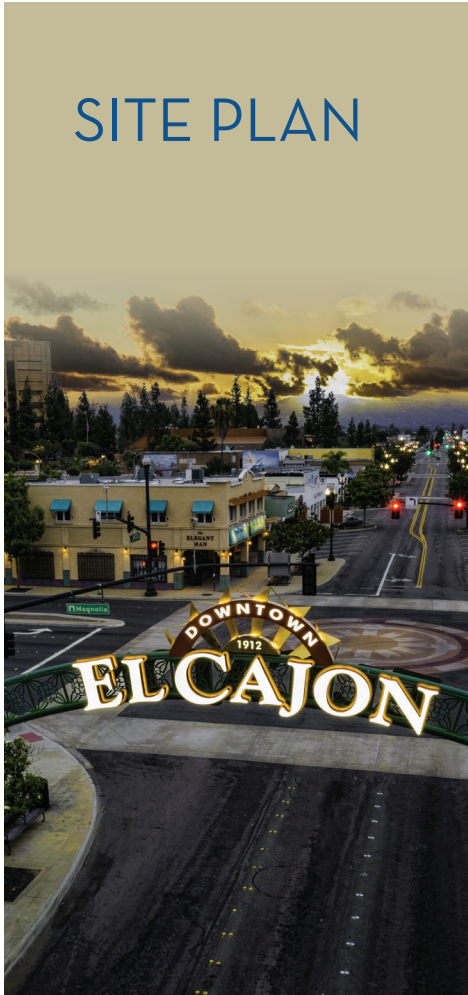


SECOND FLOOR

1118 N. Anza St., El Cajon, CA 92021  
(760) 994-9648 | [karen@hallmarkcommunities.com](mailto:karen@hallmarkcommunities.com) | [HallmarkCommunities.com](http://HallmarkCommunities.com)



Floor plans are artists' conceptions and any dimensions are approximate. In an effort to continuously improve its product, Hallmark Communities reserves the right to alter floor plans, features, specifications and pricing without notice. Entries, windows and balconies may vary by location. Not all vehicles will fit in all garage spaces. All information (including but not limited to prices, availability, incentives, floor plans, site plans, features, standards and options, assessments and fees, planned amenities, programs, conceptual artist renderings, and community development plans) is not guaranteed and remains subject to change or delay without notice. Maps and plans are not to scale and all dimensions are approximate. CA DRE # 01106135 © 2022 Hallmark Communities



# SITE PLAN



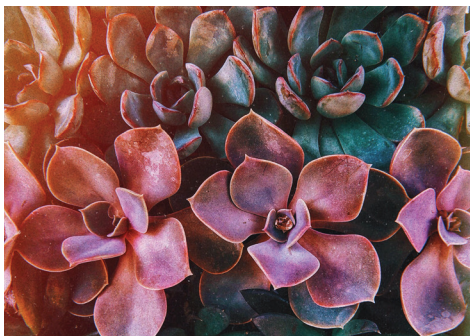
- Plan 1
- Plan 2

1118 N. Anza St., El Cajon, CA 92021  
 (760) 994-9648 | [karen@hallmarkcommunities.com](mailto:karen@hallmarkcommunities.com) | [HallmarkCommunities.com](http://HallmarkCommunities.com)



Floor plans are artists' conceptions and any dimensions are approximate. In an effort to continuously improve its product, Hallmark Communities reserves the right to alter floor plans, features, specifications and pricing without notice. Entries, windows and balconies may vary by location. Not all vehicles will fit in all garage spaces. All information (including but not limited to prices, availability, incentives, floor plans, features, standards and options, assessments and fees, planned amenities, programs, conceptual artist renderings, and community development plans) is not guaranteed and remains subject to change or delay without notice. Maps and plans are not to scale and all dimensions are approximate. CA DRE # 01106135 © 2022 Hallmark Communities





# INCLUDED FEATURES

## DISTINCTIVE EXTERIORS

- Modern Craftsman, Spanish & Santa Barbara architecture design
- Private backyards
- Entry door with bronze hardware on exterior and chrome on the interior
- Private, two-car garage with insulated, app-friendly, sectional roll-up door and electronic opener with two transmitters
- Impressive Interiors

## OPEN FLOOR PLANS

- Luxury vinyl plank flooring at entry, kitchen, great room, laundry, and all bathrooms
- Plush carpeting in bedrooms, closets, and stairways
- Modern shaker-style, white thermofoil cabinetry with concealed hinges, and soft close drawers and doors
- Modern ceiling mounted LED stylish light fixtures in select areas
- Ceiling fan pre-wire in family room and all bedrooms
- Smooth textured interior walls with square corners for contemporary look
- 3-1/2" Baseboard and complimentary door casings
- 6'-8" two-panel interior doors with fashionable hardware
- Two-tone interior wall paint

## MODERN GOURMET KITCHENS

- Quartz solid surface countertops
- Full height backsplash with horizontal subway ceramic tile
- Convenient under-cabinet lighting
- Stainless steel undermount double basin sink with Delta® pull-down faucet

## QUALITY APPLIANCES INCLUDED

- Stainless steel GE appliance package includes:
  - 30" Smart slide-in double oven convection range
  - Multi-cycle dishwasher
  - Energy Star French door refrigerator
  - Microwave
  - Washer and electric dryer

## PRIMARY BEDROOMS

- Comfort-height, shaker-style white thermofoil cabinetry with quartz solid surface countertops
- Undermount, white, rectangle China sinks with modern chrome finish bath fixtures
- Clear tempered glass shower enclosure with towel Bar

## ENERGY-SAVING AND SAFETY FEATURES

- Low-E dual-glazed vinyl frame windows with upgraded glass for sound transmission reduction
- Insulation between floors
- Energy-efficient LED lighting
- Hot water heater with on-demand recirculation pump
- Electric heating and central air conditioning with programmable thermostat
- Interior fire sprinkler system
- Smoke and carbon monoxide detectors
- Water-saving plumbing fixtures throughout
- Solar power

1118 N. Anza St., El Cajon, CA 92021

(760) 994-9648 | [karen@hallmarkcommunities.com](mailto:karen@hallmarkcommunities.com) | [HallmarkCommunities.com](https://www.hallmarkcommunities.com)



Floor plans are artists' conceptions and any dimensions are approximate. In an effort to continuously improve its product, Hallmark Communities reserves the right to alter floor plans, features, specifications and pricing without notice. Entries, windows and balconies may vary by location. Not all vehicles will fit in all garage spaces. All information (including but not limited to prices, availability, incentives, floor plans, site plans, features, standards and options, assessments and fees, planned amenities, programs, conceptual artist renderings, and community development plans) is not guaranteed and remains subject to change or delay without notice. Maps and plans are not to scale and all dimensions are approximate. CA DRE # 01106135 © 2022 Hallmark Communities